

# Emory+Children's Pediatric Research Center

## Update February 2014

### Research Resources:

The resources to the right are available to all investigators affiliated with Children's Healthcare of Atlanta (CHOA), including medical staff, Emory Department of Pediatrics (DOP) faculty and staff, and those outside of the DOP and CHOA who are members of our research centers. We encourage involvement of all those interested in research throughout our system, and provide this as a guide to resources along with our research website [www.pedsresearch.org](http://www.pedsresearch.org). Our goals are to build infrastructure and programs that serve a broad community of scientists and clinicians engaged in pediatric research, and provide training in grant writing and grant opportunities that enhance our extramural funding for all child health investigators affiliated with Children's Healthcare of Atlanta. For suggestions and comments on any of the initiatives and resources, please contact Paul Spearman, MD ([paul.spearman@emory.edu](mailto:paul.spearman@emory.edu)).

### Research Resources

#### Grant and Manuscript Support

➤ **Stacy Heilman, PhD**  
**Grants Advocate** (404-727-4819,  
[stacy.heilman@emory.edu](mailto:stacy.heilman@emory.edu))

- Assistance with finding grant opportunities and connecting to collaborators
- Core laboratory assistance, supervision

#### Grants & Manuscript Editing

- Prioritized for extramural funding opportunities, program projects
- Experienced at program project management, grant and scientific paper editing
- Request form on [pedsresearch.org](http://pedsresearch.org); send to Stacy Heilman.

#### Biostatistics Core

➤ Traci Leong, PhD  
 ➤ Courtney McCracken, PhD  
 ➤ Scott Gillespie, MS

*Procedure:* Request form located at <http://www.pedsresearch.org/core/detail/biostats>

*Priorities:* analysis for grant applications and publications

#### Clinical studies/ coordinators

➤ **Kris Rogers, RN, CRA**  
**Director**, Clinical Research:  
 (404-785-1215,  
[Kristine.rogers@choa.org](mailto:Kristine.rogers@choa.org))

➤ **Manager, Egleston campus:**  
**Allison Wellons** (404-785-6459,  
[Allison.wellons@choa.org](mailto:Allison.wellons@choa.org))

➤ **Manager, Hughes Spalding/Scottish Rite campuses:** **Beena Desai**  
 (404-785-2269,  
[beena.desai@choa.org](mailto:beena.desai@choa.org))

➤ **Nurse Manager, Pediatric Research Unit (Egleston):**  
**Stephanie Meisner, RN**  
[Stephanie.Meisner@choa.org](mailto:Stephanie.Meisner@choa.org)  
 (404-785-0400-main number)

➤ **Pediatric Research Unit (Egleston):**  
*Services: The Research Department manages clinical coordinators and research nurses centrally, and provides training in research procedures and compliance. As needs grow or new grants are obtained, new personnel are hired who report to Kris Rogers and to the natural supervisor (grant PI, service line chief, division director).*

#### Common Equipment/ Specimen Processing Core

**2<sup>nd</sup> floor ECC 260 lab:**  
**Technical Director:**  
 ➤ **Yelena Blinder**  
[ybesnov@emory.edu](mailto:ybesnov@emory.edu)

**Equipment:** Biosafety cabinet, incubators, clinical centrifuge, real-time PCR machine, standard PCR machine, multilabel plate reader, gel documentation system on order

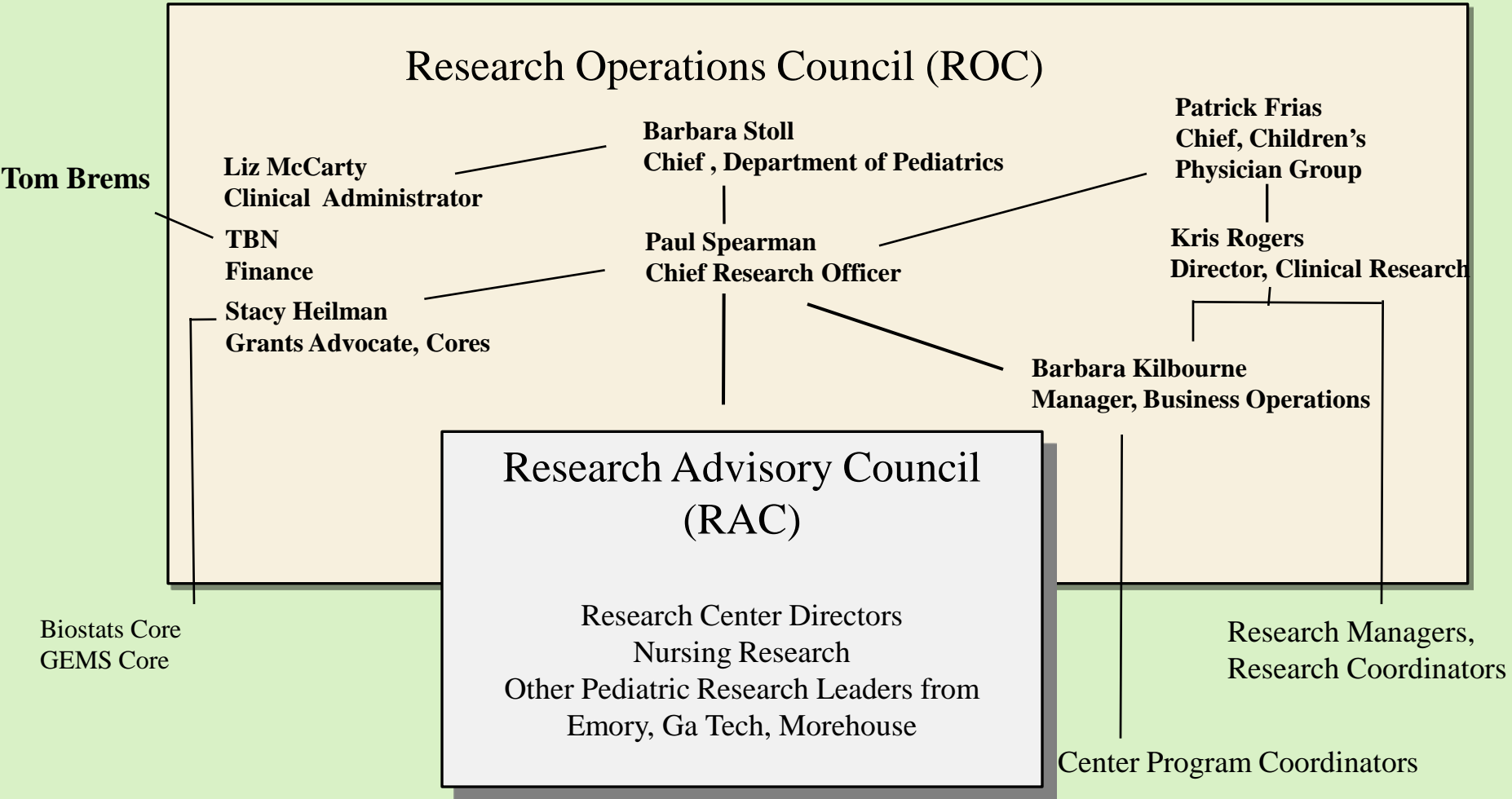
**Services:** this core provides common equipment for investigator's use, including access to benchtop space and hood space, centrifuges for clinical specimen processing

#### Laboratory Specimen Processing: Egleston

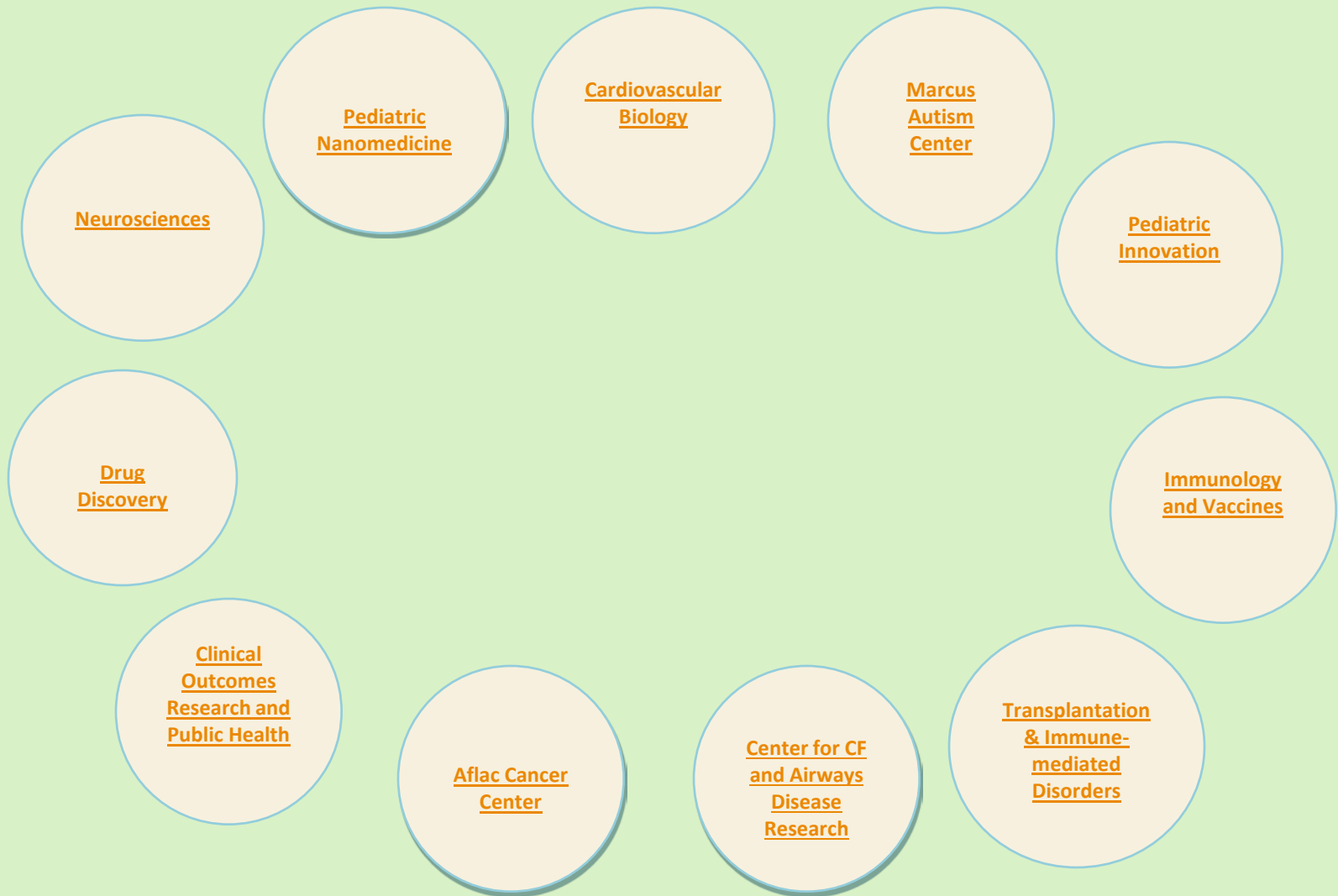
**Manager:** Diana Worthington-White (404-785-1721  
[diana.worthington-white@choa.org](mailto:diana.worthington-white@choa.org))

- Clinical trials specimen processing, shipping, limited storage
- ACTSI processing lab
- Laboratory inventory management system (LIMS) available

# Research Leadership:



# Emory+Children's Pediatric Research Centers\*



\*For more information, please see center WebPages

# Center in Development:

## Clinical/Translational Research Center

(New leader to be recruited)

- Organize pediatric clinical research units, ACTSI relationship, research nurse/coordinator pool, and support for multicenter trials networks
- NIH and other extramural funding emphasized, as for all sponsored activities
- **Mission:** This Center will engage those clinical investigators who perform interventional clinical research, including trials of drugs, devices, and vaccines. The Clinical/Translational Research Center will be the research “home” for clinical investigators throughout the system who are not primarily epidemiologists/outcomes researchers. We envision the leader of this center leading and organizing further the central clinical research resources, including the distribution of research coordinators, managers, and data analysts. Clinical informatics will be a key part of this Center, shared with the Outcomes/Wellness Center.

# Emory+Children's Pediatric Research Center Contacts

## Center Directors:

### **Aflac Cancer and Blood Disorders Center**

**Center Director: Bill Woods, MD**

[william.woods@choa.org](mailto:william.woods@choa.org)

Program Coordinator: Linda Campbell

[linda.campbell@emory.edu](mailto:linda.campbell@emory.edu)

### **Center for Cardiovascular Biology**

**Center Director: Mike Davis, PhD**

[michael.davis@bme.gatech.edu](mailto:michael.davis@bme.gatech.edu)

Program Coordinator: Kristen Herzegh,

BA, MPH [kcoshau@emory.edu](mailto:kcoshau@emory.edu)

### **Children's Center for Clinical and Translational Research**

**Center Director: TBN**

Program Coordinator: Andrea Paul

[Tonika.paul@choa.org](mailto:Tonika.paul@choa.org)

### **Center for Cystic Fibrosis & Airways Disease Research**

**Center Director: Nael McCarty, PhD**

[namccar@emory.edu](mailto:namccar@emory.edu)

Program Coordinator: Andrea Paul

[Tonika.paul@choa.org](mailto:Tonika.paul@choa.org)

### **Center for Drug Discovery**

**Center Director: Baek Kim, PhD**

[Baek.kim@emory.edu](mailto:Baek.kim@emory.edu)

Program Coordinator: Kristen Herzegh,

BA, MPH [kcoshau@emory.edu](mailto:kcoshau@emory.edu)

### **Center for Immunology and Vaccines**

**Center Director: Paul Spearman, MD**

[paul.spearman@emory.edu](mailto:paul.spearman@emory.edu)

Program Coordinator: Kristen Herzegh,

BA, MPH [kcoshau@emory.edu](mailto:kcoshau@emory.edu)

### **Center for Neurosciences Research**

**Center Director: Ton deGrauw, MD,**

**PhD** [ton.degrauw@choa.org](mailto:ton.degrauw@choa.org)

Program Coordinator: Jennifer Kenny

[jkenny@emory.edu](mailto:jkenny@emory.edu)

### **Center for Pediatric Innovation**

**Center Directors: Bob Guldberg, PhD and Kevin Maher, MD**

[robert.guldberg@me.gatech.edu](mailto:robert.guldberg@me.gatech.edu) and

[maherk@kidsheart.com](mailto:maherk@kidsheart.com)

Program Coordinator: Hazel Stevens

[hazel.stevens@me.gatech.edu](mailto:hazel.stevens@me.gatech.edu)

### **Center for Pediatric Nanomedicine**

**Center Director: Gang Bao, PhD**

[gang.bao@bme.gatech.edu](mailto:gang.bao@bme.gatech.edu)

Senior Manager: Amy Tang

[amy.tang@bme.gatech.edu](mailto:amy.tang@bme.gatech.edu)

Program Coordinator: Erin Kirshtein

[Erin.kirshtein@bme.gatech.edu](mailto:Erin.kirshtein@bme.gatech.edu)

### **Center for Transplantation & Immune-mediated Disorders**

**Center Directors: Subra Kugathasan, MD and Allan Kirk, MD, PhD**

[skugath@emory.edu](mailto:skugath@emory.edu) and

[adkirk@emory.edu](mailto:adkirk@emory.edu)

Program Coordinator: Jennifer Kenny

[jkenny@emory.edu](mailto:jkenny@emory.edu)

### **Clinical Outcomes Research and Public Health**

**Center Director: Paul Spearman, MD (Acting)**

[paul.spearman@emory.edu](mailto:paul.spearman@emory.edu)

Program Coordinator: Andrea Paul

[Tonika.paul@choa.org](mailto:Tonika.paul@choa.org)

### **Marcus Autism Center**

**Center Director: Ami Klin, PhD**

**Director of Research: Warren Jones, PhD**

[ami.klin@emory.edu](mailto:ami.klin@emory.edu) or

[ami.klin@choa.org](mailto:ami.klin@choa.org) and

[warren.r.jones@choa.org](mailto:warren.r.jones@choa.org)

Program Coordinator: Barbara

Kilbourne [barbara.kilbourne@choa.org](mailto:barbara.kilbourne@choa.org)

## Research Center Administration:

### **Barbara J. Stoll, MD**

George W. Brumley, Jr. Professor and Chair

Department of Pediatrics

Emory University School of Medicine

President, Emory Children's Center

Director, The Pediatric Center of Georgia

[barbara\\_stoll@oz.ped.emory.edu](mailto:barbara_stoll@oz.ped.emory.edu)

### **Patrick Frias, MD**

Chief, Children's Physician Group

Children's Healthcare of Atlanta

### **Paul Spearman, MD**

Nahmias-Schinazi Professor and Chief, Pediatric Infectious Diseases

Chief Research Officer, Children's Healthcare of Atlanta

Vice Chair for Research, Department of Pediatrics,

Emory University

[paul.spearman@emory.edu](mailto:paul.spearman@emory.edu)

### **Kris Rogers, RN, CRA**

Director of Research & Graduate Medical Education

Children's Healthcare of Atlanta

[kristine.rogers@choa.org](mailto:kristine.rogers@choa.org)

### **Liz McCarty**

Clinical Administrator

Department of Pediatrics, Emory University

[mmccar2@emory.edu](mailto:mmccar2@emory.edu)

### **TBN**

Director of Finance, Academic Administration

Children's Healthcare of Atlanta

### **Stacy S. Heilman, PhD**

Director of Programs & Grants Advocate

Department of Pediatrics, Emory University &

Children's Healthcare of Atlanta

[stacy.heilman@emory.edu](mailto:stacy.heilman@emory.edu)

### **Barbara W. Kilbourne, RN, MPH**

Manager, Business Operations

Research Strategy Leadership

Children's Healthcare of Atlanta

[barbara.kilbourne@choa.org](mailto:barbara.kilbourne@choa.org)

# Research-sponsored events/meetings:

(This is an overview, for specific dates/events, go to: <http://www.pedsresearch.org/calendar> )

MONDAYS	TUESDAYS	WEDNESDAYS	THURSDAYS	FRIDAYS	VARIOUS DAYS
<p>Research Operations Council (ROC) meetings: occurs weekly at Egleston, 1<sup>st</sup> Floor Admin Boardroom. Designed for central team to discuss detailed operations and issues.</p>		<p>Research Brainstorming Sessions: Help as needed to allow development and exploration of special research topics. For suggested topic nominations, contact (<a href="mailto:Stacy.heilman@emory.edu">Stacy.heilman@emory.edu</a>)</p>		<p>PerCS: 10 AM coffee social every 1<sup>st</sup> and 3<sup>rd</sup> Friday, usually held 3<sup>rd</sup> floor break area, E-CC</p>	<p>Research Advisory Council (RAC) meetings: twice monthly; restricted to RAC membership, contact Paul Spearman for inquiries or suggestions <a href="mailto:paul.spearman@emory.edu">paul.spearman@emory.edu</a></p>
<p>K club: Monthly discussions/lectures for K award training, other grants training/education. Typically 2<sup>nd</sup> Monday, September to May, Contact Stacy Heilman (<a href="mailto:Stacy.heilman@emory.edu">Stacy.heilman@emory.edu</a>) for more information. <i>Sponsored by Departments of Pediatrics and Medicine and ACTSI.</i></p>		<p>Research Grand Rounds: 3<sup>rd</sup> Wednesday of month, Egleston, 7:30 AM</p>		<p>Research Seminars: Fridays (Egleston Classrooms). Contact Barbara Kilbourne for suggestions or needs (<a href="mailto:barbara.kilbourne@choa.org">barbara.kilbourne@choa.org</a>)</p>	<p>Invited speakers through seminar series sponsored by centers; contact Center Directors or Barbara Kilbourne at <a href="mailto:barbara.kilbourne@choa.org">barbara.kilbourne@choa.org</a> if interested in upcoming events. Center Directors are listed on <a href="http://pedsresearch.org">pedsresearch.org</a> website.</p>

# Specialized Research Equipment/Service Cores:

CORE	SCIENTIFIC DIRECTOR	TECHNICAL DIRECTOR/CONTACT	EQUIPMENT	LOCATION	SERVICES
<a href="#"><u>Animal Physiology Core</u></a>	Mary Wagner, PhD <a href="mailto:mary.wagner@emory.edu">mary.wagner@emory.edu</a> 404-727-1336	Rong Jiang, MD <a href="mailto:rjiang2@emory.edu">rjiang2@emory.edu</a>	Small animal surgical equipment	Emory-Children's Center, 3 <sup>rd</sup> Floor Lab	This core assists with and provides the surgical expertise and equipment for small animal survival surgery, including IACUC protocol assistance. Currently, the core offers pulmonary banding, aortic banding, coronary ligation and intramyocardial injections for mice, rats and rabbits and is available for development of other surgical procedures.
<a href="#"><u>Biomarkers Core</u></a>	Lou Ann Brown, PhD <a href="mailto:lou.ann.brown@emory.edu">lou.ann.brown@emory.edu</a> 404-727-5739	Janine Ward <a href="mailto:janine.ward@emory.edu">janine.ward@emory.edu</a>	Agilent gas chromatography/mass spectrometer and Waters high performance HPLC with fluorescence detector	Emory-Children's Center, 3 <sup>rd</sup> Floor Lab	This core analyzes markers of oxidative stress and markers of alcohol exposure. Speak to Scientific Director about other chromatography/mass spec assays available.
<a href="#"><u>Cardiovascular Imaging Research Core (CIRC)</u></a>	Ritu Sachdeva, MD <a href="mailto:sachdevar@kidshcart.com">sachdevar@kidshcart.com</a> 404-785-CIRC	Carey K. Lamphier, RN, BSN, CCRC <a href="mailto:Carey.lamphier@choa.org">Carey.lamphier@choa.org</a>	-Echocardiograms - Flow Doppler -3-D Imaging -Upright Bicycle -VO2 Analysis -Electrocardiogram -Cardiac MRI Nursing Services	Outpatient Cardiac Services, 2 <sup>nd</sup> Floor, Tower 1	This core provides non-invasive cardiac support for investigators involved in clinical research involving infants, children and adolescents. The CIRC has dedicated space, equipment and staff to provide you with quality cardiovascular imaging data that is collected in a meticulous, systematic, detail-orientated manner. Because of our unique set-up, we are able to utilize state-of-the-art imaging modalities not typically seen in the clinical setting.

# Specialized Research Equipment/Service Cores (continued)

CORE	SCIENTIFIC DIRECTOR	TECHNICAL DIRECTOR/CONTACT	EQUIPMENT	LOCATION	SERVICES
<a href="#">Flow Cytometry/Cell Sorting</a>	David Archer <a href="mailto:darcher@emory.edu">darcher@emory.edu</a>	Aaron Rae <a href="mailto:aaron.j.rae@emory.edu">aaron.j.rae@emory.edu</a>	FACSCanto, LSRII, FACSARIA, AutoMACS	Health Sciences Research Building, E-362	This core offers access to several state of the art analytical flow cytometers as well as high-speed cell sorting. We also offer training as well as expert help to enable our users to improve the quality and scope of their research.
<a href="#">Immunology Core</a>	Larry Anderson <a href="mailto:larry.anderson@emory.edu">larry.anderson@emory.edu</a>  404-712-6604	Sujin Lee, PhD <a href="mailto:sujin.lee@emory.edu">sujin.lee@emory.edu</a>	Specimen processing (hood, centrifuges, Coulter counter), Zeiss ELISPOT reader, ELISAs, assay design for intracellular cytokine staining (ICS), luminex 200 assays for protein quantitation, real-time PCR	Emory-Children's Center, Room 510	This core provides equipment and technical expertise for the performance of immunologic assays and diagnostic assays for infectious pathogens. Our mission is to enhance the ability of investigators at Children's and affiliated institutions to perform research in the areas of immunology, vaccine testing, and infectious diseases.
<a href="#">Radiology Core</a>	<a href="#">Radiologists</a> at Children's are board certified with additional training in pediatric imaging and are available for consultation upon request.  This operation also includes <a href="#">physicists with imaging expertise and other staff experts</a> .	Melinda Dobbs, RN, BSN, CCRC <a href="mailto:melinda.dobbs@choa.org">melinda.dobbs@choa.org</a>	<ul style="list-style-type: none"> <li>• Access to clinical CT (4), PET (1), Bone Densitometry (2), Fluoroscopy (8), Nuclear Medicine (4), Ultrasound (9) and X-ray.</li> <li>• Access to 6 clinical MRI scanners including a 1.0T intraoperative, 1.5T and 3T systems.</li> <li>• Access to 2 fMRI systems.</li> <li>• Sedation Services</li> <li>• Access to radiology investigators specializing in radiology, neuroradiology and interventional radiology.</li> <li>• Access to MRI physicists (3).</li> <li>• Access to research professionals including administrators and research coordinators.</li> <li>• Administrative services including scheduling, archival of images</li> </ul>		The is an interdisciplinary research core that recognizes the importance of medical imaging in the diagnosis and treatment of diseases in children and young adults. PIRC provides investigators with modern imaging technology and collaborating imaging researchers to achieve research goals. Our team consults with investigators to enhance their research through access to state-of-the-art technology and enables the conduct of standard imaging associated with large clinical trials. Services include MRI, CT, PET, Bone Densitometry, Fluoroscopy, Nuclear Medicine, Ultrasound and X-ray.

CORE in Development	EQUIPMENT/LOCATION	DESCRIPTION
<a href="#">Specimen Repository</a>  (which will enhance the Specimen Processing Core)	LIMS, freezers (-80, LN2)  Sync with freezer space in new building; temporary space until then being identified	The specimen repository will offer organized storage of blood and body fluids and nucleic acids. Tissue repository services are under further discussion. Specimen processing can be coordinated to link with the specimen repository. Bar-coded standard vial storage and a dedicated LIMS will offer automated tracking and organized retrieval of specimens.



# Partnership Core

CORE	SCIENTIFIC DIRECTORS	EQUIPMENT	LOCATION	SERVICES
<p><a href="#"><u>Integrated Cell Imaging Core</u></a></p>	<p>Adam Marcus, PhD Director, ICI <a href="mailto:aimarcu@emory.edu"><u>aimarcu@emory.edu</u></a> Alexa Mattheyses, PhD Associate Director, ICI <a href="mailto:mattheyses@emory.edu"><u>mattheyses@emory.edu</u></a> Neil Anthony, PhD <a href="mailto:neil.anthony@emory.edu"><u>neil.anthony@emory.edu</u></a> 404-969-CORE</p>	<p>The rates for the microscopes included in this effort can be found at: <a href="http://ici.emory.edu/document/ICI%20Pediatrics%20Rates.pdf"><u>http://ici.emory.edu/document/ICI%20Pediatrics%20Rates.pdf</u></a>. Pediatric researchers will benefit from a 40% subsidy when using any of the ICI equipment and technologies. ICI also provides expert consultation, training, and assistance on all technologies. More information on the microscopes and services available, locations, and how to become a user is available at <a href="http://ici.emory.edu"><u>ici.emory.edu</u></a></p>	<p>A partnership facilitated by the Emory School of Medicine and includes the Emory+Children's Pediatric Research Center Cellular Imaging Core along with other cellular imaging sites on campus including Winship Cancer Institute, Emory NINDS Neuroscience Core Facilities (ENNCF), and the Department of Physiology</p>	<p>This core provides training and access to advanced cellular imaging systems, including confocal and TIRF microscopy. For more information: <a href="http://www.pedsresearch.org/cores/detail/cell-imaging"><u>http://www.pedsresearch.org/cores/detail/cell-imaging</u></a></p>

# Funding Opportunities:

Funding Opportunity	Funding Limit	Funding Term	Eligibility	Post Award Expectations	Additional Information
Friends	\$50,000	12-18 months	<ol style="list-style-type: none"> <li>1. Children's professional staff</li> <li>2. Must be for clinical research taking place in Children's facilities</li> </ol>	<ol style="list-style-type: none"> <li>1. Must provide annual and final reports</li> <li>2. Must be willing to present findings to Friends groups, Children's leadership, etc</li> </ol>	<ol style="list-style-type: none"> <li>1. Fund was originally created for non-Faculty who were not eligible for EECRC funding</li> <li>2. Fund does not provide for investigator salary support</li> </ol>
Pediatric Seed Grants (formerly EECRC)	\$50,000	12 months	<ol style="list-style-type: none"> <li>1. Regular faculty in clinical departments at Emory. Applicants outside of DoP must have clinical privileges at Children's.</li> <li>2. Must not have an active R01 or P01.</li> <li>3. Must provide agency and proposed date they will submit for extramural funding</li> </ol>	Must submit a grant to an extramural agency	\$25,000 of total award may be directed to investigator salary
Center Pilot Grants	Varies by Center	1 year	Varies by Center	Annual report	
Dudley Moore Nursing and Allied Health Research Fund	\$15,000	6-18 months	<ol style="list-style-type: none"> <li>1. All Children's nursing and allied health staff who provide services at one of Children's locations are eligible.</li> <li>2. Excludes those with regular faculty appointments or who are employed by Emory</li> <li>3. Projects must have an impact on enhanced patient care, priority is given to projects that will provide evidence to change practice.</li> </ol>	Must be willing to present findings by request.	Fund restricted by donor to support nursing and allied health research at Children's

# Additional Resources/Updates:

## Research listserv:

Contact [barbara.kilbourne@choa.org](mailto:barbara.kilbourne@choa.org) to be added to this listserv used to disseminate all pediatric research related announcements including seminars, funding opportunities, such as BiRD (Bringing in the Research Dollars), and the Weekly PREP (Pediatric Research Events and Programs)

## Website:

[www.pedsresearch.org](http://www.pedsresearch.org)

This is the central resource for research seminar info, contacts, cores, calendars, forms

## Health Sciences Research Building:

1760 Haygood Road

Atlanta, GA 30322

190,000 ft<sup>2</sup>; 115,000 for pediatric research

Dry and wet lab research

For floor plans go to: [http://pedsresearch.org/files/HSRB\\_FloorPlans.pdf](http://pedsresearch.org/files/HSRB_FloorPlans.pdf)

Go to: <http://www.pedsresearch.org/about-us> for more info

# Research Recruitment Update:

NAME	PHOTO	CENTER	TITLE	START DATE	RECRUITED FROM	RESEARCH INTERESTS
Elizabeth "Beth" Stenger, MD		Aflac Cancer and Blood Disorders Center	Assistant Professor	August 2013	Children's Hospital of Pittsburgh, University of Pittsburgh	Enhanced IL-12 Production by mTOR-inhibited DC and Protection from GVHD
Brandon Aylward, PhD		Children's Center for Neurosciences/ Children's Center for Cardiovascular Biology	Assistant Professor	July 2013	Cincinnati Children's Hospital Medical Center	He received his doctoral degree in clinical child psychology with a minor in quantitative psychology from the University of Kansas and completed his predoctoral residency program at Cincinnati Children's. His research interests encompass a broad range of health-related issues for children and adolescents within the context of pediatric psychology. To this end, his work has focused on three main areas: (1) predictors and correlates of children's psychosocial, developmental and physical functioning in various chronic illness populations; (2) trends and correlates of adherence and self-management behaviors; and 3) use of advanced statistical methodology and innovative technology to examine predictors and outcomes for chronic health issues.
Baek Kim, PhD		Center for Drug Discovery	Professor, Director, Children's Center for Drug Discovery	May 2013	University of Rochester Medical Center School of Medicine and Dentistry	His 20 years of experience in biochemical and virological research, which has been fully supported by NIH, has been focused on the replication process and cell tropism of HIV/AIDS and influenza virus. Recently, Dr. Kim has recently initiated enzymological and mechanistic research on WNV and Dengue RNA polymerases, which will be incorporated into the drug discovery programs of the center.
Hyunmi Kim, MD, PhD		Children's Center for Neurosciences	Pediatric Neurologist, Head of Children's Epilepsy Program	April 2013	University of Alabama in Birmingham	Pediatric neurology