

# 2023

# PEDIATRIC DIGESTIVE HEALTH CONFERENCE

Feeding, Eating, and  
Swallowing Disorders:  
Contributing Medical  
and Psychological  
Factors from Birth  
through Early  
Adulthood

August 11 and 12, 2023  
Emory University



**Children's**<sup>SM</sup>  
Healthcare of Atlanta



EMORY  
UNIVERSITY



## Conference Program

# 2023 Pediatric Digestive Health Conference

## *Welcome!*

Dear Colleagues,

We would like to formally welcome you to the 2<sup>nd</sup> annual Pediatric Digestive Health Conference. The success of last year's conference in bringing together clinicians from multiple disciplines who all share a passion for caring for children with feeding difficulties provided the momentum and excitement to make this an annual event. We are thrilled to welcome folks from all over the region who have congregated to try to improve the lives of these children. We are equally delighted to welcome renowned experts from across the country who are leading the way in the area of pediatric feeding and related disorders. They will share their knowledge and provide multidisciplinary approaches to evidence-based medical, cognitive/behavioral, dietary, oral-motor, and family-based treatment.

This year's conference will focus on "Feeding, Eating, and Swallowing Disorders: **Contributing Medical and Psychological Factors from Birth through Early Adulthood**," specifically highlighting medical and psychological aspects of feeding problems at various ages in pediatrics. The multidisciplinary sessions follow the course of development, from infancy to childhood to adolescence and beyond. We hope the combination of presentations by local researchers and colleagues from institutions throughout the country will promote discussion and innovation in all aspects of pediatric feeding disorder (e.g., assessment, classification, diagnostic criteria, management, treatment strategies/approaches, clinical outcomes, and future research areas).

We encourage you to take every networking opportunity to connect with fellow attendees, forge new collaborations and fresh partnerships, and continue advancing the field of pediatric feeding disorder in hopes to improve clinical outcomes and positively impact psychosocial and nutritional health in pediatrics.



**Barbara McElhanon, MD**  
Medical Director  
Children's Multidisciplinary Feeding Program  
Pediatric Gastroenterologist  
Children's Physician Group  
Children's Healthcare of Atlanta  
Associate Professor  
Division of Pediatric Gastroenterology,  
Hepatology, and Nutrition  
Department of Pediatrics  
Emory University School of Medicine



**Nikhila Raol, MD, MPH, FAAP**  
Pediatric Otolaryngologist  
Division of Pediatric Otolaryngology  
Children's Healthcare of Atlanta  
Associate Professor  
Department of Otolaryngology-Head and  
Neck Surgery  
Emory University School of Medicine

# Table of Contents

Agenda .....	1
Accreditation Statements .....	4
Keynote Speakers .....	5
Faculty Speakers .....	7
Acknowledgments .....	12

# 2023 Pediatric Digestive Health Conference

## Feeding, Eating, and Swallowing Disorders: Contributing Medical and Psychological Factors from Birth through Early Adulthood

### AGENDA – Friday, August 11, 2023

8:30 a.m.	Registration and continental breakfast
9:00 a.m.	Welcome and Introductions <i>Barbara McElhanon, MD and Nikhila Raol, MD, MPH, FAAP</i> Children's Healthcare of Atlanta Emory University School of Medicine
9:10 a.m.	<b>Keynote</b> <b>Pediatric Dysphagia: What We Know and Need to Know</b>  <i>Maureen Lefton-Greif, PhD, CCC-SLP, BCS-S</i> Professor Emerita of Medicine The Johns Hopkins University School of Medicine
10:30 a.m.	Break
	<b>Multidisciplinary Panel: Medical and Nutritional Contributions to Feeding Issues in Infancy</b>
10:45 a.m.	Feeding Difficulties in Infants with Cardiac Disease <i>Shanelle Clarke, MD</i> Children's Healthcare of Atlanta Emory University School of Medicine
11:45 a.m.	Small Problems in Infants: The Tongue Tie Debate <i>Nikhila Raol, MD, MPH, FAAP</i> Children's Healthcare of Atlanta Emory University School of Medicine
12:30 p.m.	Lunch / Visit Exhibitors  <b>Please note: no food or drinks allowed in the Auditorium.</b>
1:00 p.m.	Nutrition/GI Perspective in Feeding Issues in Infancy <i>Rashelle Berry, MPH, MS, RDN, CSP, LD</i> Children's Healthcare of Atlanta
1:30 p.m.	Moderator for Q&A Infant Feeding Issues <i>Maureen Lefton-Greif, PhD, CCC-SLP, BCS-S</i>

1:55 p.m.	Housekeeping and Introductions <i>Barbara McElhanon, MD</i>
2:00 p.m.	<b>Keynote</b> <b>Obstacles for Feeding in Eosinophilic Esophagitis</b>  <i>Amanda Muir, MD, MTR</i> Assistant Professor of Pediatrics at the Children's Hospital of Philadelphia Attending Physician, Children's Hospital of Philadelphia Associate Director of Fellowship Research, Children's Hospital of Philadelphia
2:45 p.m.	Break
	<b>Multidisciplinary Panel: Childhood Feeding Issues</b>
3:00 p.m.	Food is Medicine: Evidence towards Nutritional Interventions to Treat Disease <i>Hillary Bashaw, MD, MS</i> Children's Healthcare of Atlanta Emory University School of Medicine
4:00 p.m.	ARFID as a Treatable Complication of Pediatric Food Allergy: The Intersection of Medically Required Food Avoidance and Highly Restrictive Food Intake <i>Kaitlin Proctor, PhD</i> Children's Healthcare of Atlanta Emory University School of Medicine
4:40 p.m.	Moderator for Q&A Childhood Feeding Issues <i>Amanda Muir, MD, MTR</i>
5:00 p.m.	Reception Heavy hors d'oeuvres Beer/wine

## AGENDA – Saturday, August 12, 2023

8:30 a.m.	Registration and breakfast
9:00 a.m.	Welcome and Introductions <i>Nikhila Raol, MD, MPH, FAAP</i> and <i>Barbara McElhanon, MD</i> Children’s Healthcare of Atlanta Emory University School of Medicine
9:10 a.m.	<b>Keynote</b> <b>It’s All in Their Head! Management of Pediatric Abdominal Pain</b>  <i>Cheryl Hartzell, MD</i> Pediatric Pain Physician and Pediatric Anesthesiologist Cincinnati Children’s Hospital  Assistant Professor University of Cincinnati
10:10 a.m.	Break
	<b>Multidisciplinary Panel: ARFID/Adolescent Feeding Issues</b>
10:20 a.m.	Mechanisms and Clinical Presentations of Avoidant/Restrictive Food Intake Disorder: Implications for Treatment <i>Hana Zickgraf, PhD</i> Children’s Healthcare of Atlanta Emory University School of Medicine
11:10 a.m.	Nutrition Perspectives in ARFID <i>Leslie Schlapfer, MS, RD, CSP, LD</i> Children’s Healthcare of Atlanta
11:40 a.m.	Moderator for Q&A Adolescent Feeding Issues <i>Cheryl Hartzell, MD</i>
12:00 p.m.	Partnership News, Closing Remarks and Adjournment <i>Hayley Estrem, PhD, RN, University of North Carolina at Wilmington</i> <i>Barbara McElhanon, MD and Nikhila Raol, MD, MPH, FAAP</i>

# Accreditation Statements

## Physician Education

Children's Healthcare of Atlanta is accredited by the Medical Association of Georgia to provide continuing medical education for physicians.

Children's designates this live activity for a maximum of 9.25 *AMA PRA Category 1 Credits™*. Physicians should claim only the credit commensurate with the extent of their participation in the activity.

## ASHA



**ASHA CE**  
**APPROVED PROVIDER**

**Children's Healthcare of Atlanta**

Intermediate Level

.9 ASHA CEUs

## Dietitian

The Commission on Dietetic Registration (CDR) has approved this activity for 9.25 CPEU credits.

# Keynote Speakers

**Maureen Lefton-Greif, PhD, CCC-SLP, BCS-S, The Johns Hopkins University School of Medicine**



***Friday, August 11, 2023, 9:10am***

Maureen A. Lefton-Greif, PhD, CCC/SLP, BCS-S is a Professor Emerita of Medicine at the Johns Hopkins University School of Medicine. Prior to her current position, she was Professor in Pediatrics, Otolaryngology Head/Neck Surgery, and Physical Medicine/Rehabilitation. Dr. Lefton-Greif's clinical practice and research focus on feeding/swallowing development, and the evaluation and management of its disorders. Her specific research interests focus on characterizing swallowing and swallowing disorders in children and adults diagnosed with complex aerodigestive and rare conditions with pediatric origins. She participates in the multidisciplinary clinical and research group studying the natural history of Ataxia Telangiectasia and is co-investigator for NIH-supported grants to develop a functional scale for clinical trial readiness. In collaboration with Cure SMA, she's developing a Spinal Muscular Atrophy- specific bulbar scale to quantify outcome measures for clinical trials. Her NIH funded research led to the development of the first standardized, reliable, and valid scale for the videofluoroscopic assessment of swallowing function of bottle-fed children. As an extension of this work, she is a co-investigator on an NIH funded study on Radiation Exposure in Infants and Children from Videofluoroscopic Swallow Studies. She developed the Feeding/Swallowing Impact Survey (FS-IS), which is the first outcome measure to assess the impact of children's feeding and swallowing problems on their caregivers, and has been translated into Turkish, Brazilian Portuguese, and Afrikaans. She has written more than 40 peer-reviewed articles, 13 chapters and 2 books. Dr. Lefton-Greif is Fellow of the American Speech-Language Hearing Association and a founding member of the Board of Certified Specialists in Swallowing and Swallowing Disorders.

**Abstract: *Pediatric Dysphagia: What We Know and Need to Know***

This session will focus on the evolution of our understanding of dysphagia with pediatric origins. Topics will include: population trends, the current impact of standardization on assessment and management decision-making in affected children, the development of the BabyVFSSImp®, and identification of areas of future research that hold promise of elevating the clinical outcomes associated with pediatric dysphagia. Patient examples will illustrate key concepts.

**Amanda Muir, MD, MTR, Children's Hospital of Philadelphia**



***Friday, August 11, 2023, 2:00pm***



The aim of Dr. Muir's research program is to improve the lives of children with eosinophilic esophagitis (EoE) and prevent the devastating consequences of esophageal inflammation and subsequent fibrosis. Among its many complications, esophageal fibrosis is the most striking complication of EoE, predisposing subjects to recurrent food impactions, emergent endoscopy, impaired esophageal motility, and esophageal stricture.

Dr. Muir works to develop novel approaches to detect and treat fibrosis and inflammation in the esophagus. Her studies emphasize the dynamic interplay between the epithelium and fibroblasts in order to pursue a detailed understanding of homeostatic signaling mechanisms in esophageal mucosa. Her lab uses 3D in vitro models and in vivo models of allergic disease, in addition to heavily utilizing patient-derived biopsies and serum specimens.

In addition, Dr. Muir has ongoing clinical/translational studies evaluating esophageal remodeling. Along with her lab team, she employs a technique that uses high-resolution impedance palimetry (EndoFLIP) to determine the distensibility of the esophagus and better appreciate ongoing esophageal remodeling. Her current studies seek to better understand the natural history of EoE during the maturation process and the effects of long-term disease activity in pediatric EoE.

**Abstract: *Obstacles for Feeding in Eosinophilic Esophagitis***

This presentation will address the history and definition of eosinophilic esophagitis (EoE), as well as the consequences of esophageal stiffness and investigational methods to evaluate it. Basic science and clinical approaches to EoE fibrosis will be described and compared. Current research in eating and feeding behaviors among patients with EoE will be explored.

**Cheryl Hartzell, MD**, Cincinnati Children's Hospital; University of Cincinnati



***Saturday, August 12, 2023, 9:10am***

I am a pediatric chronic and acute pain physician and pediatric anesthesiologist at Cincinnati Children's Hospital and Assistant Professor at University of Cincinnati. I am triple board-certified in pain medicine, anesthesiology and pediatric anesthesiology. I am also the associate program director of the pediatric pain fellowship at Cincinnati Children's.

My main advocacy interest is to educate and empower non-pain trained pediatric medical practitioners to begin the treatment of pediatric chronic pain effectively and confidently until they may be able to see a pediatric chronic pain specialist. My advocacy thus far has been accomplished through multiple speaking opportunities ranging from institutional to international conferences.

My main research interest is in pediatric chronic post-surgical pain (CPSP) and was the recipient of the Society of Pediatric Anesthesiology young investigator grant for my project examining the efficacy of mindfulness interventions in the perioperative period on postoperative pain outcomes, including CPSP. I am forming clinical collaborations with multiple surgical specialties to identify and preoperatively evaluate patients at risk for CPSP by the outpatient multidisciplinary pain team.

**Abstract: *It's All in Their Head! Management of Pediatric Abdominal Pain***

Following this presentation, the attendee will be able to:

- Describe the pathophysiology of chronic pain and the impact of abdominal pain in the pediatric population,
- Define the classifications and diagnostic criteria of functional GI disorders, and
- Understand and apply the basic principles of the multi-disciplinary approach to treatment and rehabilitation of a pediatric patient with abdominal pain.

# Faculty Speakers

**Shanelle Clarke, MD**, Children's Healthcare of Atlanta; Emory University School of Medicine



***Friday, August 11, 2023, 10:45am***

Shanelle Clarke, MD, has been with the Children's Heart Center since 2016. She is an Assistant Professor of Pediatrics at Emory University School of Medicine and the Associate Director of the Cardiac Intensive Care Unit at Children's Healthcare of Atlanta. She completed her fellowships in Critical Care and Cardiology at Children's Hospital of Wisconsin at Medical College of Wisconsin in Milwaukee, WI. Prior to that, she completed her pediatric residency at Monroe Carell Jr. Children's Hospital at Vanderbilt in Nashville, TN. Her clinical focus is the care of pediatric patients with congenital heart disease in the cardiac intensive care unit (CICU). She is also developing a cardiac simulation program for the Heart Center team to promote improvement in multidisciplinary processes and team member communication.

**Abstract: *Feeding Difficulties in Infants with Cardiac Disease***

Feeding challenges in infants with cardiac disease can be an overlooked aspect of their care that is often complicated by the complex hemodynamic changes in these patients. The goal of this session is to review the prevalent cardiac diseases that affect infants and the impact on their health, as well as discuss the various challenges from a physiologic and psychosocial standpoint, that affect feeding from the inpatient to the outpatient setting.

**Nikhila Raol, MD, MPH, FAAP**, Children's Healthcare of Atlanta; Emory University School of Medicine



***Friday, August 11, 2023, 11:45am***

Dr. Nikhila R. Raol received her MD degree from the University of Texas Southwestern Medical School (2008) and her Master of Public Health from Harvard School of Public Health (2015). Her postgraduate medical training included an Otolaryngology Head and Neck Surgery Residency at Baylor College of Medicine (2013) and a Pediatric Otolaryngology Fellowship at the Massachusetts Eye and Ear Infirmary (2016). She works as an Otolaryngology Head and Neck Surgery faculty member for the Department of Otolaryngology's Division of Pediatric Otolaryngology within the Emory Clinic, based at Children's Healthcare of Atlanta. Her clinical interests include pediatric feeding disorders and pediatric obstructive sleep apnea. Dr. Raol is currently studying how to improve outcomes in children with pediatric feeding disorder. Specifically, populations of interest are children with congenital heart disease and those with ankyloglossia. Dr. Raol was recently awarded a Fulbright Scholarship. As a Fulbright Scholar starting in September 2023, she will travel to Hyderabad, Telangana, India, to work at the Niloufer Hospital for Women and Children (affiliated with Osmania Medical College) for observational field study and interviews. Her project, entitled "Investigating the role of ankyloglossia in

breastfeeding difficulties,” will evaluate the role of ankyloglossia on successful breastfeeding maintenance in Telangana, where breastfeeding maintenance rates at six months are high but rates of tongue tip clipping are much lower.

**Abstract: *Small Problems in Infants: The Tongue Tie Debate***

Ankyloglossia, or tongue tie, occurs in approximately 8% of the U.S. population, and procedures to release the tongue tie have been increasing with dramatic frequency over the past 10 years, primarily in Western countries. However, controversy continues to exist regarding best practices for management and which infants should undergo a procedure. In this session, we will discuss the various methods of assessment for ankyloglossia, indications for procedures, controversies in management, and the nuances of decision-making in this patient population. At the conclusion of this session, the audience members should be able to better understand the impact of ankyloglossia, as well as recognize the gaps in knowledge and areas where further study is needed to aid in evidence-based decision-making for ankyloglossia.

**Rashelle Berry, MPH, MS, RDN, CSP, LD**, Children’s Healthcare of Atlanta



***Friday, August 11, 2023, 1:00pm***

Rashelle Berry has worked as a nutritionist in the Children’s Healthcare of Atlanta multidisciplinary feeding program for the past 15 years, most recently as the Nutrition Manager. She has worked with children with developmental and intellectual disabilities as well as medically complex children for the entirety of her career. She is on the Georgia Board of Examiners of Dietitians; a position appointed by the Governor. She also serves as an accreditation reviewer for the Accreditation Council for Education in Nutrition and Dietetics. Rashelle’s current clinical focus is in nutrition, growth, and feeding in medically complex children. She is especially passionate about working with infants.

**Abstract: *Nutrition/GI Perspective in Feeding Issues in Infancy***

Medical advances have led to greatly improved survival outcomes for medically complex infants, yet feeding issues in this population persist. Feeding issues include growth concerns, poor tolerance with feeds, dysphagia, and feeding tube dependence, just to name a few. This session will focus on how to provide adequate nutrition during this critical time of growth, while also focusing on the transition to oral intake. The importance of working across disciplines will also be highlighted.

**Hillary Bashaw, MD, MS**, Children’s Healthcare of Atlanta; Emory University School of Medicine



***Friday, August 11, 2023, 3:00pm***

Dr. Hillary Bashaw is a pediatric gastroenterologist focused on enteral and parenteral nutrition therapy. She specializes in tube feeding and advanced nutrition care, seeing patients with specialized nutrition needs in her General GI clinic as well

as through the Intestinal Rehabilitation of Children's and Cystic Fibrosis clinics to provide GI-focused care to children with complex medical conditions. Dr. Bashaw is committed to improving care for all children by contributing to Clinical Care Guideline development and Quality Improvement interventions.

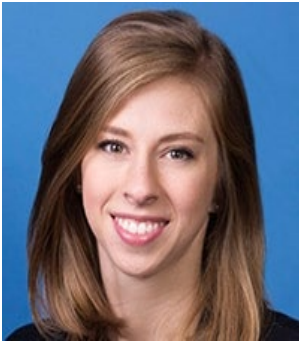
**Abstract: *Food is Medicine: Evidence towards Nutritional Interventions to Treat Disease***

Medical Nutrition Therapy (MNT) is a well-established, nutrition-based approach to alleviating, managing, and even treating certain medical conditions. It has been proven effective for many common chronic illnesses, such as heart disease, diabetes, cancer, kidney disease, and digestive disorders. While MNT is an individualized treatment plan implemented by a dietitian for a specific patient, the principles of nutrition as medicine can be more broadly applied for a variety of digestive disorders, provided nutritional interventions are evidence-based and safe for most patients.

After this lecture, participants will be able to:

- Outline common digestive disorders that benefit from nutrition as treatment.
- Articulate evidence for nutritional management of digestive disorders.
- Describe the potential pitfalls of using elimination diets to treat digestive disorders.

**Kaitlin Proctor, PhD**, Children's Healthcare of Atlanta; Emory University School of Medicine



***Friday, August 11, 2023, 4:00pm***

As a psychologist in the Children's Feeding Program, I provide services in our assessment, outpatient, and day treatment programs. My research focuses on pediatric feeding disorders including ARFID, with an emphasis in health outcomes and program development for the identification and treatment of ARFID and related health conditions, including food allergy. I am also engaged in clinical service provision and scholarship advancing evidence-based behavioral mental health services for children and families with FA, including a recent publication describing the adaptation of a cognitive-behavioral anxiety paradigm to meet the unique needs of food allergic patients. With the Allergy/Immunology Division Chief (Dr. Brian Vickery) and Feeding Program Director (Dr. William Sharp), I led the opening of the state's first integrated behavioral mental health program for children and families with food allergy in the Emory+Children's Food Allergy Program. I also lead ongoing research examining the impacts of highly restrictive eating in pediatric bone health, including a recent publication describing the limited extant research on the impacts of ARFID on bone health and growth.

**Abstract: *ARFID as a Treatable Complication of Pediatric Food Allergy: The Intersection of Medically Required Food Avoidance and Highly Restrictive Food Intake***

Children with medical and neurodevelopmental conditions are at increased risk for avoidant/restrictive food intake disorder (ARFID), which is a severe but treatable behavioral feeding disorder characterized by impaired growth or significant weight loss, nutritional deficiencies, reliance on formula supplementation, and/or marked impairment in psychosocial functioning associated with feeding/eating concerns. IgE-mediated food allergy (FA) is a common pediatric chronic illness estimated to affect 5-8% of US children; despite rising prevalence, FA has not been a medical condition of focus in feeding research. Our team has been leading efforts to better identify and characterize children with co-occurring ARFID and FA. In partnership with the Emory+Children's Food Allergy Clinic, we surveyed 54 families seen for routine allergy care and found as many as 1 in 3 families endorsed child feeding problems or food avoidance consistent with "possible" or "probable" ARFID. Those endorsing ARFID symptoms reported their child excluded foods beyond the medically necessary dietary restrictions, was fearful/reluctant to try new foods, and/or that their food avoidance behavior negatively impacted family functioning. Children with predisposing biopsychosocial factors (e.g., genetics, baseline trait anxiety, heightened sensory sensitivity) or specific allergic response symptoms (e.g., nausea, vomiting) may be especially at risk for developing ARFID as a complication of the allergy, leading to excessive vigilance about food and eating, chronic and over-generalized food avoidance, and maladaptive mealtime behaviors (e.g., crying, refusing, spitting out food).

Unnecessary dietary restriction and behavioral food refusal of allergy-safe foods increases risk for malnutrition, complicates FA condition management, and compounds risk for negative psychosocial outcomes. Children with co-occurring FA and ARFID may necessitate unique consideration in the treatment of ARFID, given that persistent vigilance and dietary restrictions are medically necessary. This talk will describe comorbid ARFID and FA and discuss behavioral mental health strategies for managing these conditions when they co-occur.

**Hana Zickgraf, PhD**, Children's Healthcare of Atlanta; Emory University School of Medicine



**Saturday, August 12, 2023, 10:20am**

Dr. Zickgraf received her PhD in clinical psychology from the University of Pennsylvania. Her professional interests include developing measurement/assessment tools and interventions for avoidant/restrictive food intake disorder across the lifespan, understanding the impact of food insecurity on eating behavior and eating disorder risk, and exploring the physiological, behavioral, emotional, and cognitive mechanisms that maintain disordered eating behavior. Her current research focuses on eating and weight across the lifespan in both clinical and non-clinical populations, with a primary interest in restrictive eating not related to drive for thinness, including picky eating and fears of choking, vomiting, and GI upset.

Abstract: ***Mechanisms and Clinical Presentations of Avoidant/Restrictive Food Intake Disorder: Implications for Treatment***

Avoidant/restrictive food intake disorder (ARFID) is a heterogeneous diagnosis for presentations of disordered eating characterized by extreme selective/neophobic eating, poor appetite/limited interest in eating, or fear of aversive consequences from eating. ARFID can be diagnosed in individuals of all ages, although certain presentations (selectivity and poor appetite) begin in early childhood and as a result are associated with a younger average age of onset than other eating disorders. The three presentations of ARFID have a high degree of diagnostic overlap in treatment-seeking samples, but have distinct etiologies, and may warrant the use of presentation-specific interventions and techniques. This presentation will review the features and proposed mechanisms of each ARFID presentation and review presentation-specific techniques drawn from the evidence-based cognitive/behavioral and family-based treatment toolkits.

**Leslie Schlapfer, MS, RD, CSP, LD**, Children's Healthcare of Atlanta



**Saturday, August 12, 2023, 11:10am**

Leslie Schlapfer is a registered dietitian, board certified in pediatric nutrition, who has worked at Children's Healthcare of Atlanta since 2009. She received her Bachelor of Science in Nutrition & Dietetics from Georgia State University and a Master of Science in Health Services from Independence University. She is a founding member of the inpatient eating

disorder team at Children's Healthcare at Scottish Rite having collaborated on the first CHOA eating disorder clinical guideline in 2012 to improve outcomes for patients with restrictive eating disorders requiring medical stabilization. In 2021, she published a retrospective chart review on caloric prescriptions and incidence of refeeding syndrome in patients using the CHOA guideline. She is currently working as a nutritionist for the Marcus Feeding program.

**Abstract: *Nutrition Perspectives in ARFID***

Following this presentation, the attendee will be able to:

- Describe the factors associated with faltering growth in children and adolescents with ARFID and the impact on linear growth and bone health, as well as the critical window of time for nutritional interventions.
- Recognize that selective eaters, even at normal weights, can have serious nutritional deficiencies and that thorough dietary assessment can help with early identification, laboratory assessment, and treatment to help prevent long term medical complications.
- Understand that nutrition assessment and intervention to target goal calories for weight restoration/stabilization as well as optimizing nutritional intake are key to managing medical consequences of ARFID. Case studies will be presented.

# Acknowledgments

**Thank you** to the conference speakers for generously sharing their knowledge and expertise.

Cheryl Hartzell, MD  
Maureen Lefton-Greif, PhD, CCC-SLP, BCS-S  
Amanda Muir, MD, MTR

Hillary Bashaw, MD, MS  
Rashelle Berry, MPH, MS, RDN, CSP, LD  
Shanelle Clarke, MD  
Kaitlin Proctor, PhD  
Nikhila Raol, MD, MPH, FAAP  
Leslie Schlapfer, MS, RD, CSP, LD  
Hana Zickgraf, PhD

**Thank you** to the Conference Planning Committee for their successful efforts.

Stacy Anderson, BSHCM  
Rashelle Berry, MPH, MS, RDN, CSP, LD  
Erin Crane, MEd, CCC-SLP  
Susan Eissner  
Justin Ferretti, MPH  
Alex Glass  
Debra Hamilton, MA, PsyS  
Emily Klc, MS, RDN, LD, CNSC  
Barbara McElhanon, MD, *Co-Chair*  
Nikhila Raol, MD, MPH, FAAP, *Co-Chair*  
Cuyler Romeo, MOT, OTR/L, SCFES, IBCLC  
Volunteers: Clovis Sarmiento, Kymry Jones, Maryam Ehteshami, Mimi Le

**Thank you** to our generous exhibitors and sponsor for their support.



**Thank you** to our institutional sponsors for their support.



**Children's Multidisciplinary Feeding Program**