



# Emory + Children's Pediatric Institute Overview

---

PEARLS

June 14, 2019



# Emory + Children's Pediatric Institute

---



EMORY  
UNIVERSITY



Children's<sup>SM</sup>  
Healthcare of Atlanta

# Missions

Integration across clinical, research and teaching missions to leverage the strengths and attributes of each partner



**Clinical Mission**  
Managed by Children's



**Research Mission**  
Primarily Managed by Emory



**Teaching Mission**  
Joint Management

The Pediatric Institute clinicians will provide exceptional care at Children's

The Pediatric Institute will have strategic oversight of the research and teaching missions as the primary academic engine



EMORY  
UNIVERSITY



Children's<sup>SM</sup>  
Healthcare of Atlanta

# Our Partners

To achieve its vision, the Pediatric Institute will partner with several organizations to promote pediatric research and teaching



EMORY



Children's<sup>SM</sup>  
Healthcare of Atlanta

GEORGIA BIO<sup>TM</sup>  
The Life Sciences Partnership



MOREHOUSE  
SCHOOL OF MEDICINE



CENTERS FOR DISEASE  
CONTROL AND PREVENTION



GEORGIA  
RESEARCH  
ALLIANCE

Georgia  
Tech



 Grady



Georgia CTSA  
Georgia Clinical & Translational Science Alliance

# Pediatric Center to Pediatric Institute

	<b>Pediatric Center of Georgia</b> <i>Established 2013</i>	<b>Emory + Children's Pediatric Institute</b> <i>Established 2018</i>
<b>Ownership</b>	50% Emory and 50% Children's	50% Emory and 50% Children's
<b>Identity</b>	Not cohesive	Joint naming convention
<b>Employment</b>	Employment is directly through Emory and Children's	Pediatric Institute employs physicians and clinicians
<b>Clinical</b>	Managed by Children's	Managed by Children's
<b>Faculty Status</b>	Full rights and responsibilities at Emory	Full rights and responsibilities at Emory
<b>Funding</b>	Funding determined on an annual basis without long term funding plan	Establishes long term funding plan and financial principles
<b>Governance</b>	Oversight body	Governing body with equal representation
<b>Industry Sponsored Clinical Trials</b>	Managed by Emory and subcontracted to Children's	Managed by Children's
<b>Philanthropy</b>	No clear plan for joint fundraising	Commitment to joint fundraising efforts



# Member Structure

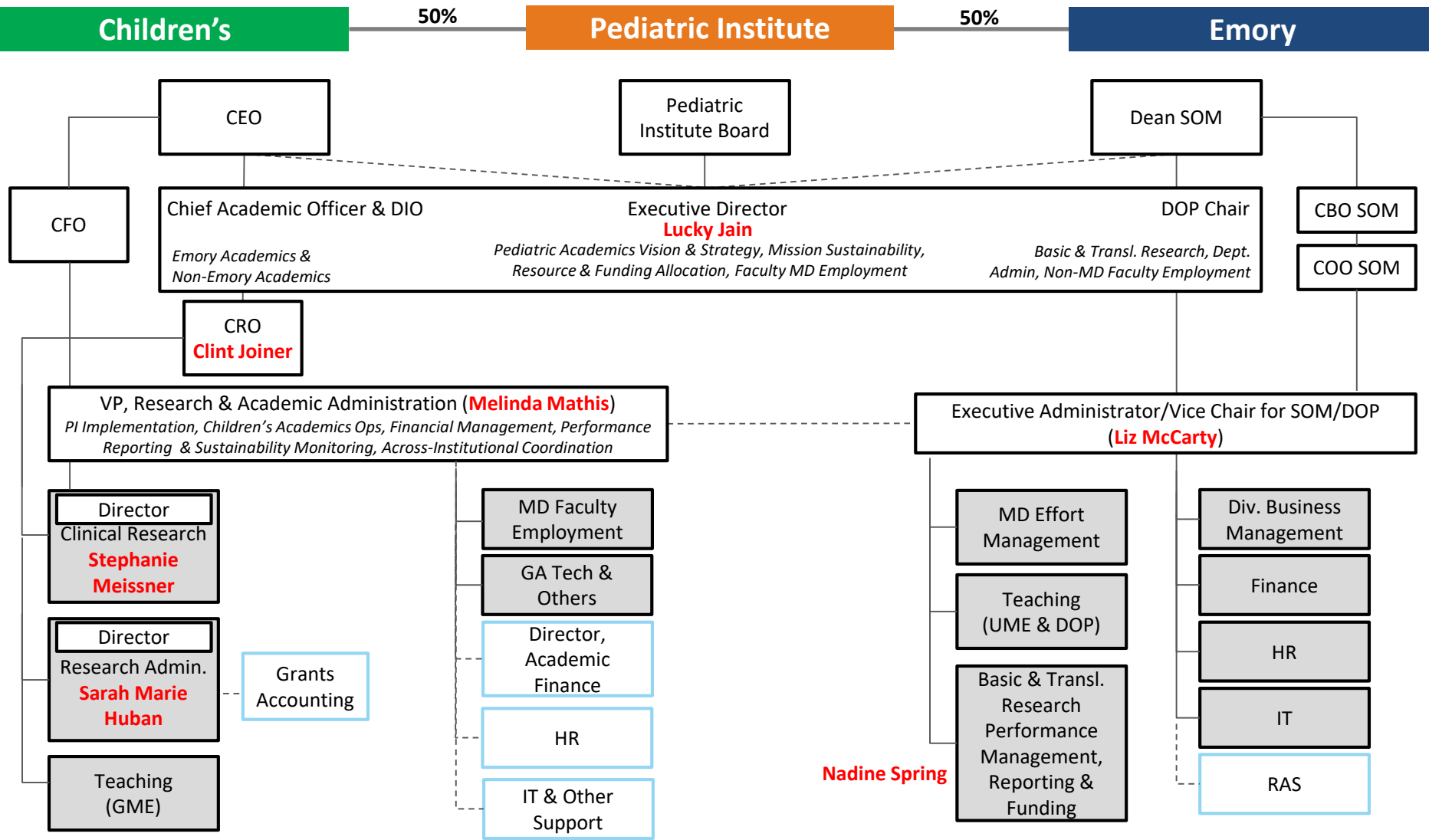
As of September 1, 2018

## Emory + Children's Pediatric Institute Members 528 Emory Faculty

Employer	Children's	Pediatric Institute	Emory
Physicians	Sibley Cardiologists (53 physicians) <i>Note: Sibley is a wholly owned subsidiary of Children's</i>	Academic physicians (324 physicians)	Exclusively Grady Physicians (20 physicians) Residents & Fellows (162 physicians) Faculty w/<.80 ped cFTE (17 physicians on CSA)
PhDs/PsyDs		Clinical PhDs/PsyDs (29 psychologists)	Research PhDs (102 PhDs)
Staff	Academic Administration, Teaching and Clinical Research Staff	← No change from current state →	Lab Staff and Departmental Support



# Organizational Structure



Legend: Reporting Relationship Functional Area Support Relationship



# What does this change mean for me?

---

- Who does this change impact?
- Where should I route my research?
  - Which studies do I submit to Children's?
  - Which studies do I submit to Emory?
- How do I submit my studies?
- What do I need to do?
- Who can help me?





# Who does this change impact?

---

- Emory faculty who transitioned to Pediatric Institute employment
- Children's and Emory Research Administration
  - IRB
  - RAS
  - Children's OSP and Grants Administration
  - Children's Compliance
  - Emory and Children's Effort Reporting

# Where should I route my research?

Type of Study	Submit to Emory	Submit to Children's
Industry Sponsored Pediatric or Pediatric + Adult Clinical Trials (location not a factor)		X
Industry Sponsored Adult-only Clinical Trials	X	
Children's Oncology Group (COG) Funded Studies		X
Investigator Initiated Funded Clinical Trials	X	
Federally Sponsored Research (i.e., NIH, FDA, CDC)	X	
Research Sponsored by Foundations and other Supporting Agencies	X	
Other Types of Studies	Contact Children's/Emory	

**The Pediatric Institute cannot receive a grant, contract, or gift award.**



# How do I submit to RAS/ORR?

---

How do I  
submit?

Emory

<https://redcap.emory.edu/surveys/?s=LHX5hbYReH>

Children's

<https://redcap.choa.org/redcap/surveys/?s=ADJ3WMHYRD>





# How do I submit to the IRB?

---

How do I  
submit?

Emory

<http://irb.emory.edu/>

Children's

<https://eirbchoa.huronresearchsuite.com>





# What do I need to do?

---

- Enhance understanding
- Work with your Research Administration Offices to make sure you submit to the correct institution
- Reach out with questions

# What is on the horizon?

---

- Possible revisions to routing criteria for industry clinical trials (never say never!)
- New RAS Director for Pediatrics
- Working with OCR on DOP Clinical Trials: budget development and invoicing
- Personnel Service Agreement: method to invoice for CRCs rather than executing a subcontract
- Improving CTA transactions and operations between our institutions

# Who can help me?

Children's	Emory
Sarah Marie Huban Director, Research Administration E: <a href="mailto:sarahmarie.huban@choa.org">sarahmarie.huban@choa.org</a> P: 404-785-7477	Bridget Wynn Clin Trials Pre-Awd Spc III (RAS) E: <a href="mailto:bridget.wynn@emory.edu">bridget.wynn@emory.edu</a> P: 404-712-6693
Stephanie Meisner Director, Clinical Research E: <a href="mailto:stephanie.meisner@choa.org">stephanie.meisner@choa.org</a> P: 404-785-6453	Nadine Spring Director, Clinical Research Services E: <a href="mailto:nadine.spring@emory.edu">nadine.spring@emory.edu</a> P: 404-727-5234
	Liz McCarty Executive Admin & Vice Chair for Administration E: <a href="mailto:mmccar2@emory.edu">mmccar2@emory.edu</a> P: 404-712-8226

# Questions?

---

- When the only Emory involvement in a study is coordinator effort, how does Emory charge the study/CHOA for coordinator effort (the study has budgeted items like questionnaires, consenting etc)?
- What is the expected length of time for completed contracts and budgets?