

PRESENTED BY:



AiR Seminar Series - ASH Conference Practice Sessions

Tuesday, December 5th - 12:30 - 1:30 PM

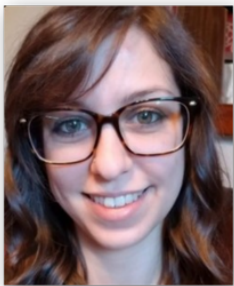


Dailia Francis, MD, PhD

The Immune Checkpoint Siglec-15 in Promoting Immune Dysregulation in Non-Hodgkin Lymphomas

Justin Yoo, MD

Rheological Characteristics of Elderly Individuals with Sickle Cell Disease Compared with an Adult Sickle Cell Population



Britney Hernandez, BS

Evaluation of GBT021601 As a Therapeutic Agent to Restore Bone Marrow Health and Effective Erythropoiesis in a Sickle Mouse Model

Christopher Chambliss, PhD, MS

Characterizing Pregnancy Outcomes in a Humanized Mouse Model of Sickle Cell Disease



Lunch will be provided @
Egleston Classroom 5
Please **RSVP** [Here](#)



Session will also be
broadcast on Zoom:
[Join Zoom Here](#)

